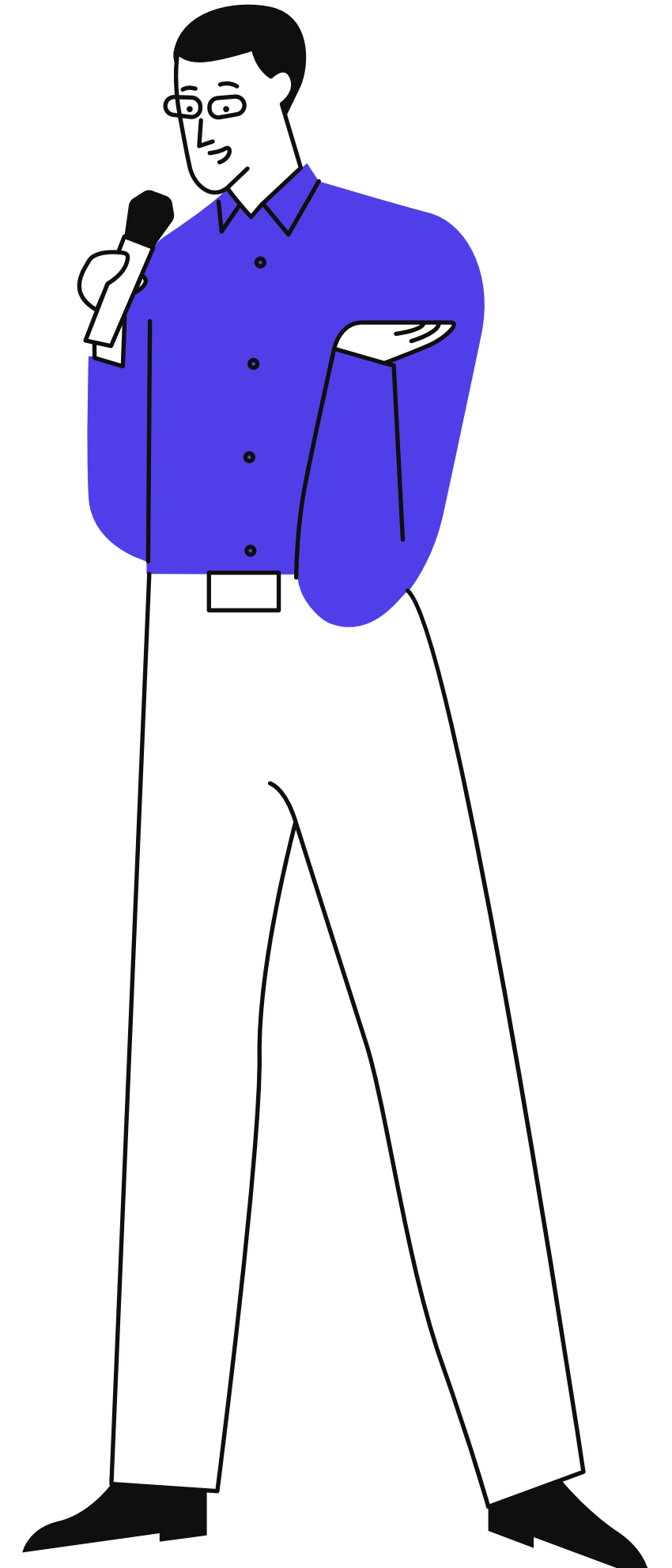




Company Profile

2024

The most customer
driven Telematics
company living on cutting
edge technologies





Who's Heliot

KNOWING HELIOT

Heliot offers services in developing platforms for logistic solutions (Logistics Solutions Platform) and vehicle tracking systems (Telematics & GPS Tracking). We provide both hardware and software for vehicle tracking and Fleet Telematics, with a focus on user experience and specialized problem-solving capabilities.

*Heliot has been licensed by the Department of Land Transport to operate as a Type 1 Telecommunications business, in accordance with the standards of the National Broadcasting and Telecommunications Commission (NBTC), and serves as a provider of GPS Tracking services.

Partner with **Ruptela**

Transport Telematics



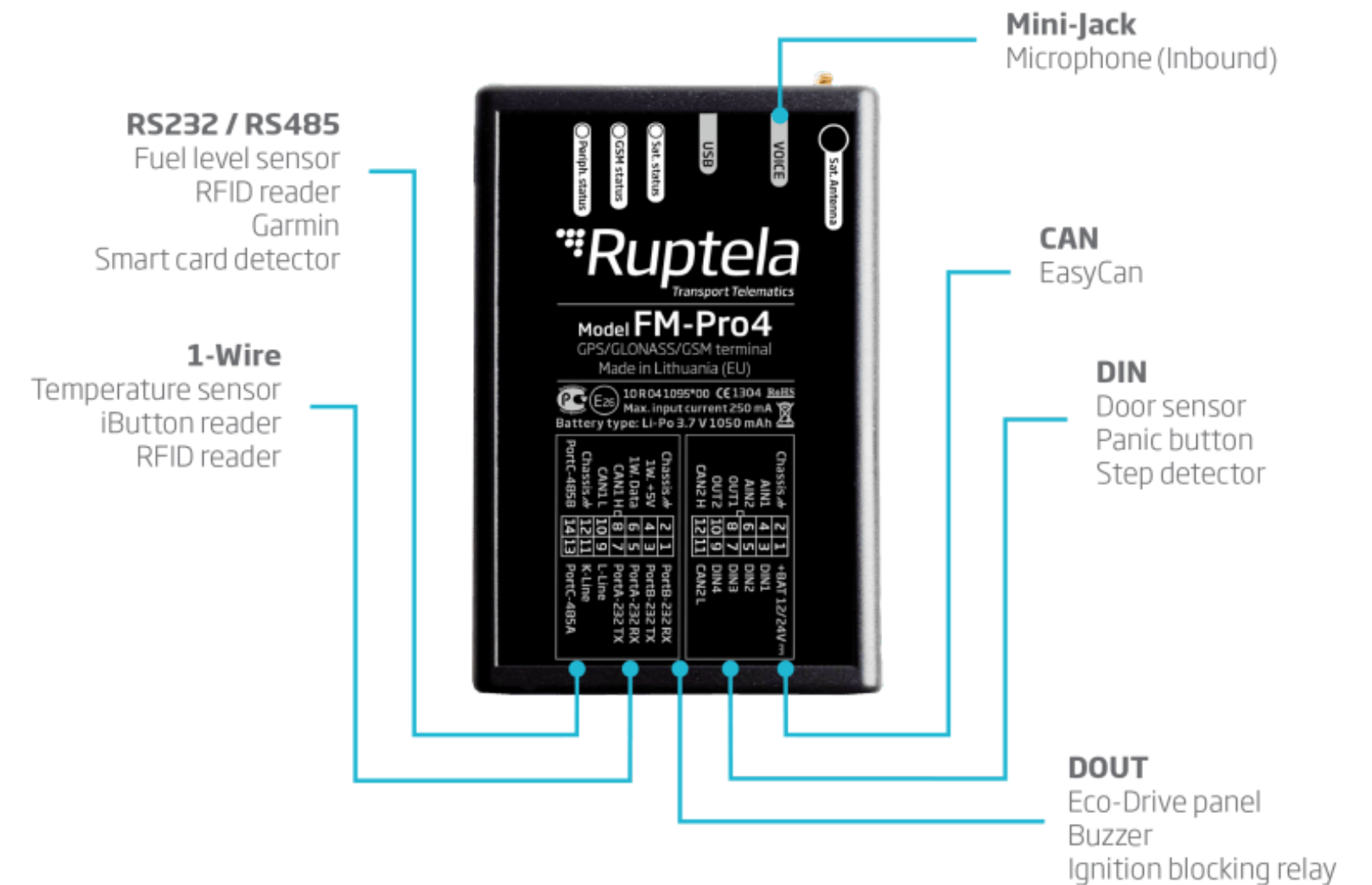
Telematics devices

Heliot imports vehicle tracking devices suitable for all types of vehicles, in compliance with the standards of the Department of Land Transport. These devices offer a variety of functionalities and boast a location accuracy of 15 meters. Equipped with three ports for additional devices, they also enable the creation of specified area boundaries and can store data for over 10,000 points when there is no GSM signal, supporting the needs of various businesses.

FM-Pro4 3G



FM-Tco4 LCV 3G



Partner with



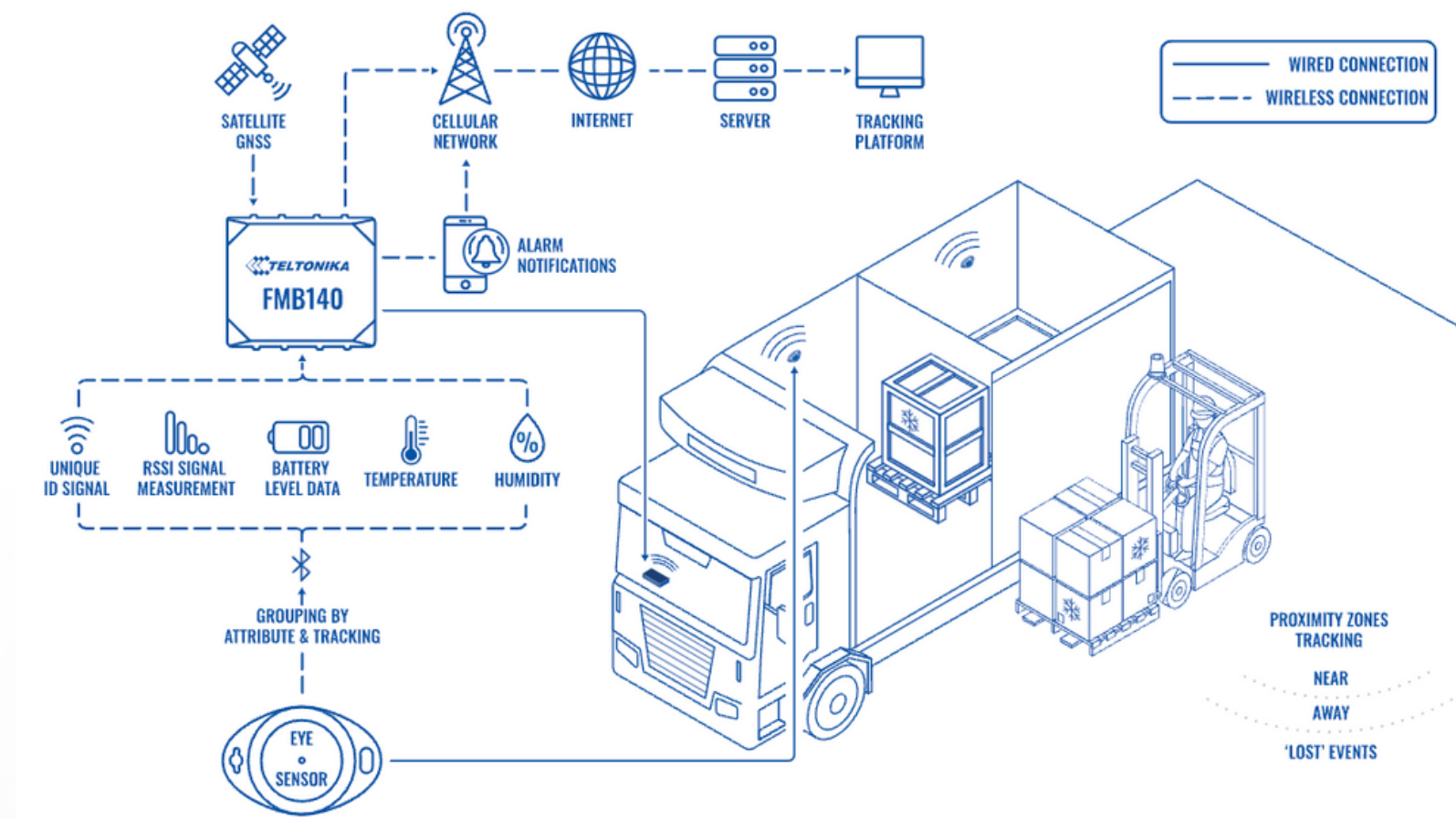
Telematics devices

Heliot imports vehicle tracking devices that fully meet the basic operational needs in Thailand. The model FMU126 is specifically designed for the Thai market. Its additional capabilities include the ability to connect with external devices via Bluetooth4.0 and BLE. An example of its application is pairing with the Eye Sensor for wireless measurement of temperature and humidity.

FMU126



Eye Sensor



Partner with Jimi IoT

Telematics devices

Heliot imports vehicle tracking devices suitable for all types of vehicles, in accordance with the standards of the Department of Land Transport. These devices are designed to support image recording systems and Realtime Monitoring. The JC400D model supports driver behavior monitoring, and there is also the V502 model, which can be self-installed through the OBD port.

JC400



JC400D



V502



Partner with



Telematics devices

VT200-L is a 4G based GPS vehicle tracker. With built-in high-precision GPS positioning module reports the vehicle location and vehicle status to the vehicle tracking service platform through the 4G network for real-time vehicle monitoring,

VT200-L contains an RS232 port, which can be connected to RFID to perform identity recognition and vehicle control for vehicle drivers;



Partner with



IoT devices

The IoT network in Thailand named Sigfox is designed to address the need for asset tracking. The installation process is straightforward, allowing for location and on/off status notifications. Data is transmitted entirely through the Sigfox system. The device's battery lasts between 2 to 5 years, depending on the frequency of data transmission."

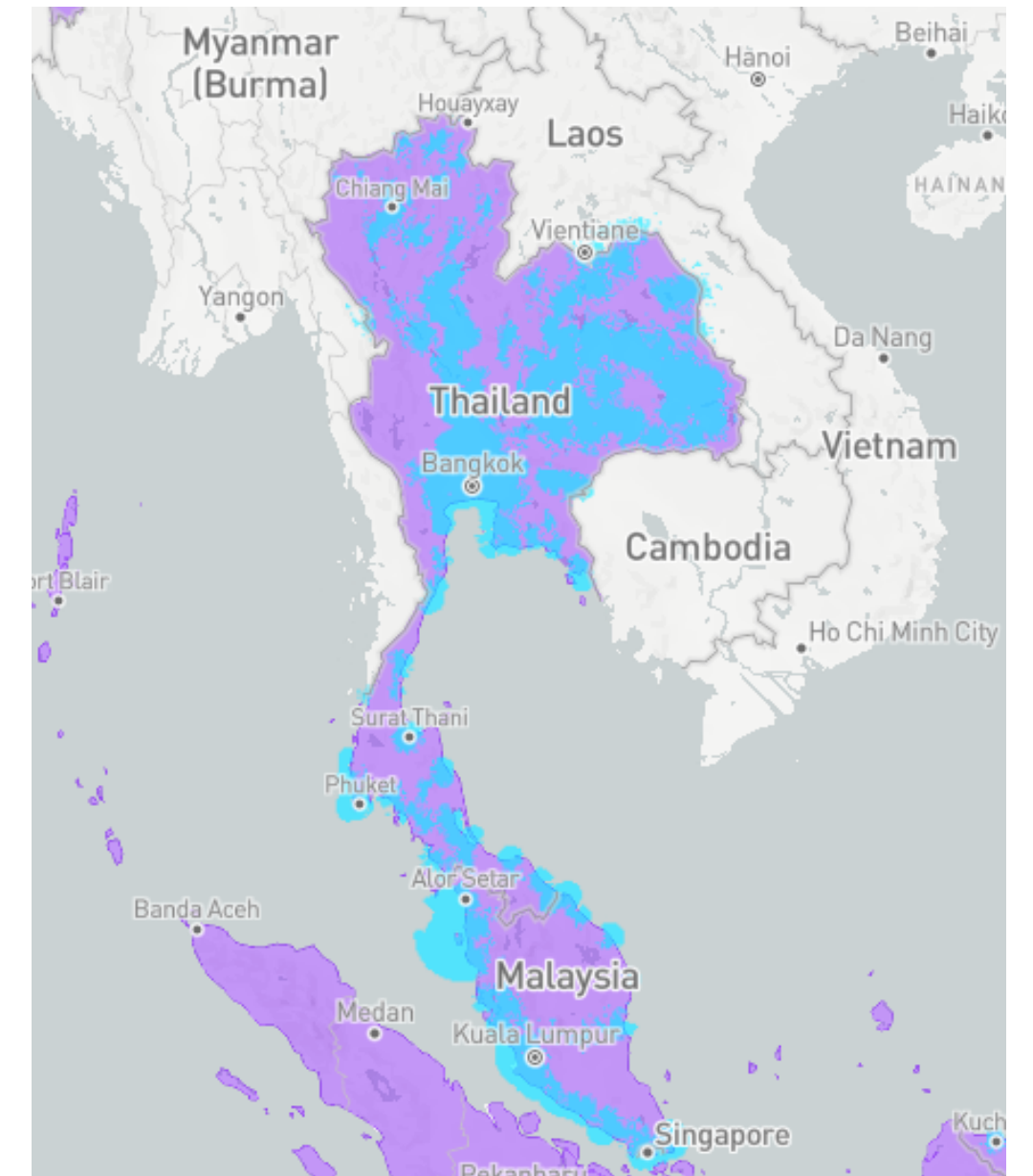
IEThing



Geosense



● Live coverage ● Country under roll-out

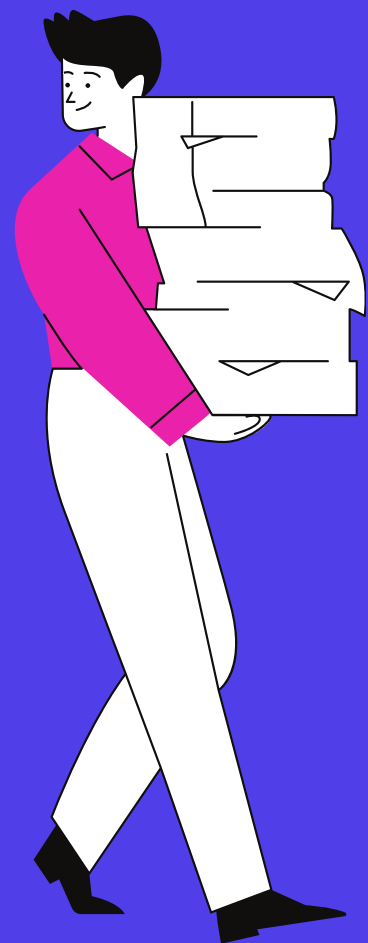
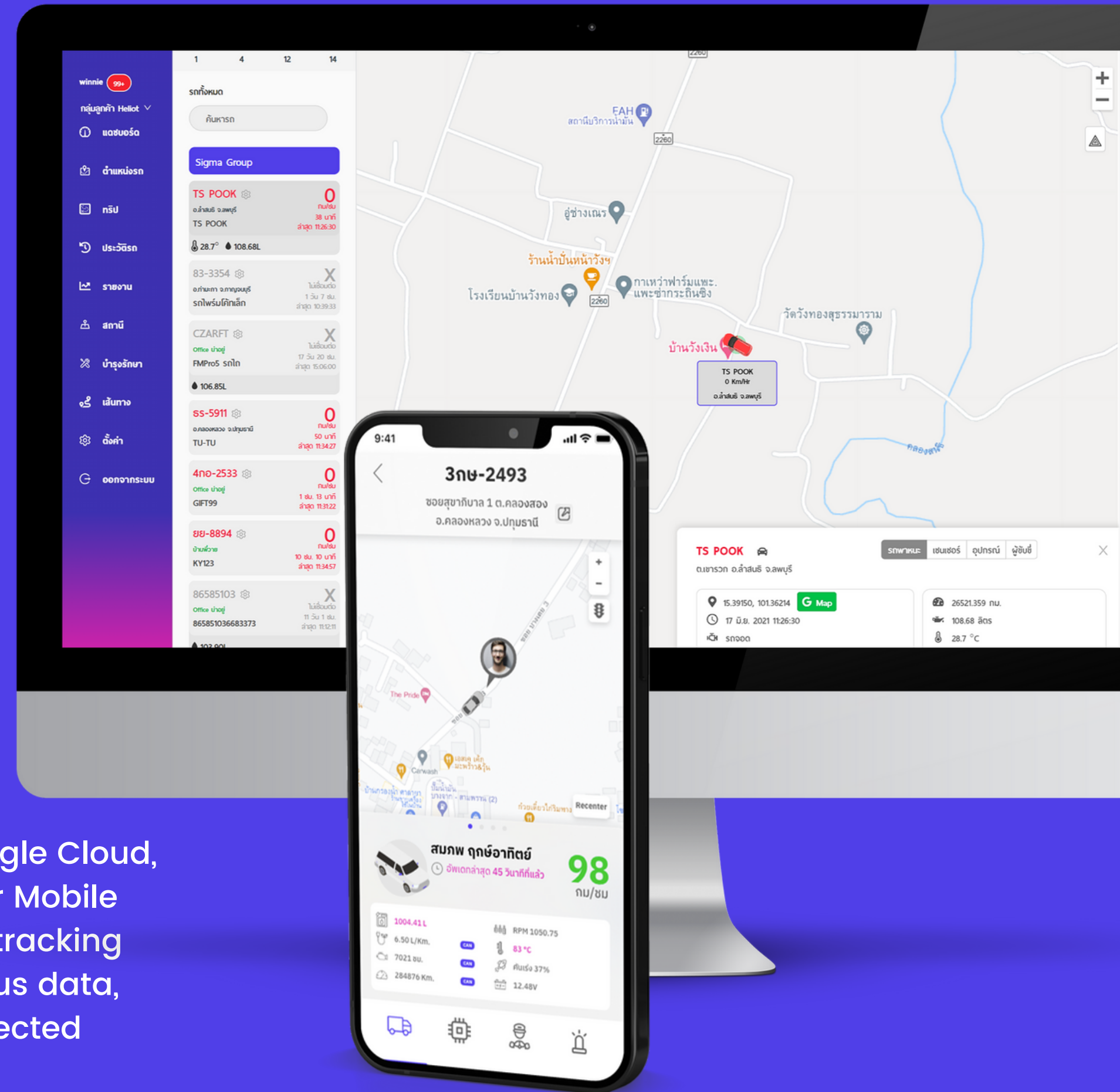




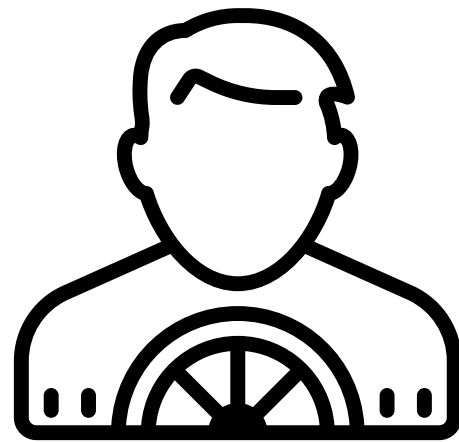
Products

Telematics platform

The car GPS tracking platform, developed on Google Cloud, comprises Heliot Fleet software and the Dinocular Mobile Application. This platform offers detailed vehicle tracking functionalities including location mapping, Canbus data, temperature, fuel level, driver identification, connected devices, and real-time data updates.



Customer Benefits



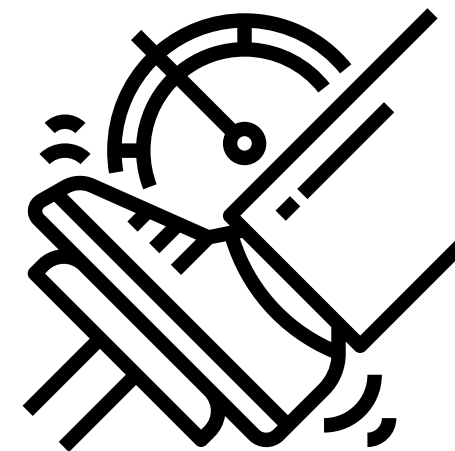
Control driver behavior

Capable of monitoring working hours, reducing employment costs, and enhancing the efficiency of drivers.



Increase efficiency in customer service

Check the time of arrival at destinations and the duration of stops at stations, allowing customers to be immediately informed.



Prevent Misuse of Vehicles.

Reduces fuel wastage due to overspeeding, idling with the engine on, and deviating from the route.



Reducing Corruption

Enables immediate or retrospective verification in cases of fraud such as fuel theft, discrepancies in fuel filling against receipts, and the opening and closing of cargo doors.

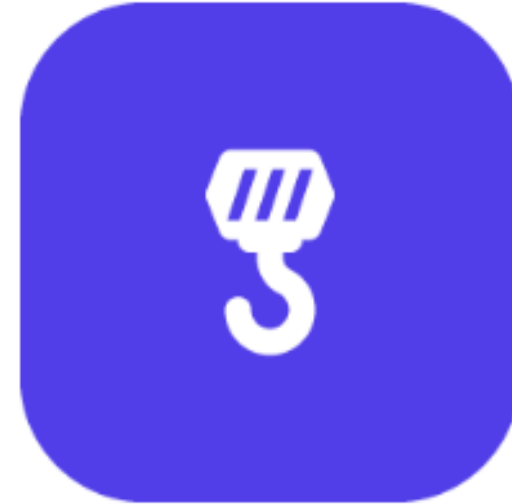
Accessories



Fuel Sensor



PTO Dumper



PTO Crane



PTO Air Conditioner
Control



PTO Door Sensor



Temperature Sensor



Limit Switch



Ignition



CANbus

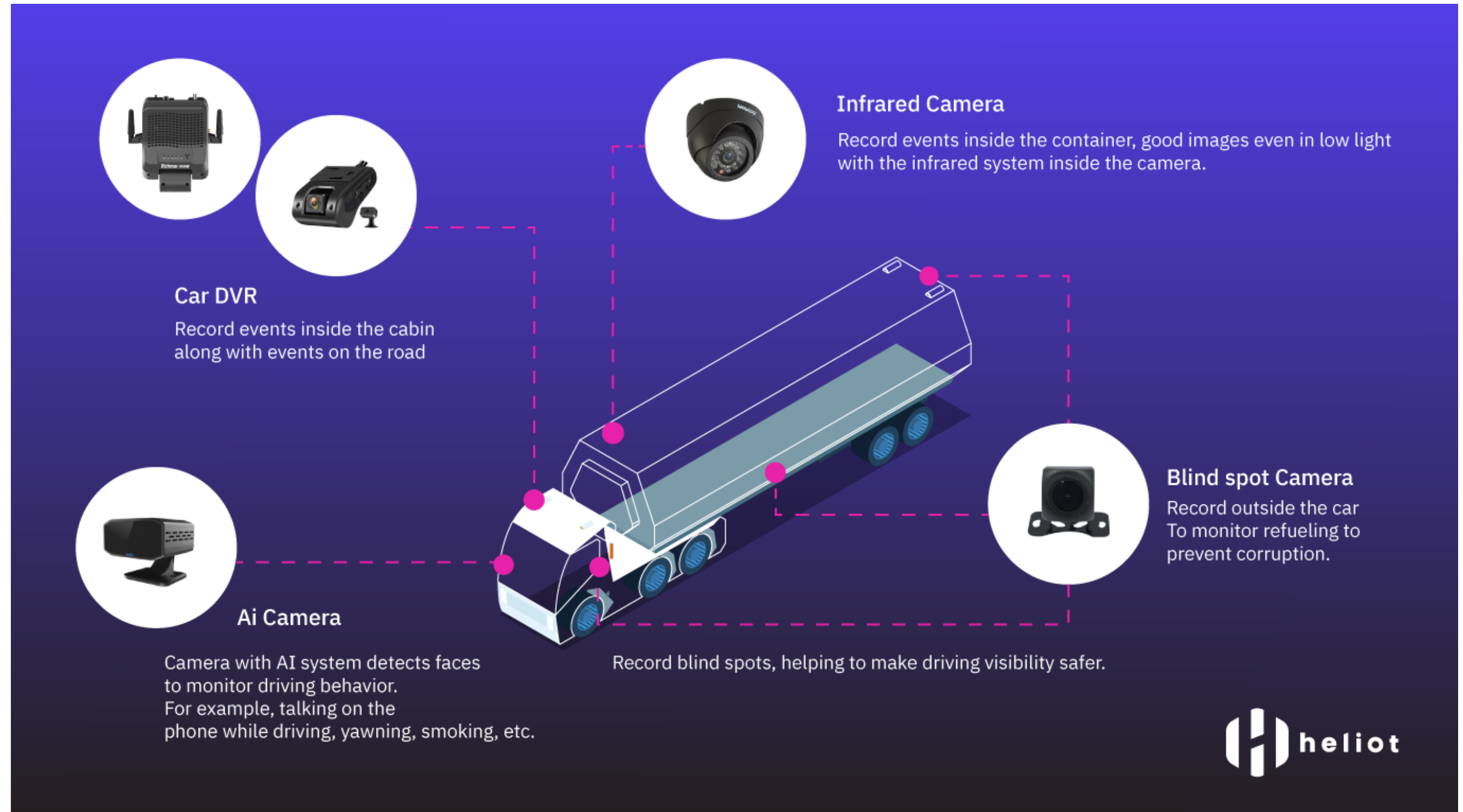


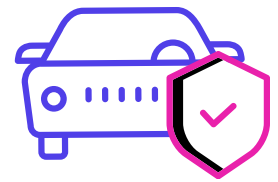
Magnetic Card Reader

Video Feature



Selecting Camera Type and Location Based on Intended Use.





Enhancing Driver Safety



Reduce costs



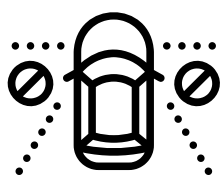
Using Evidence for Compensation Claims



Enhancing Fuel Efficiency



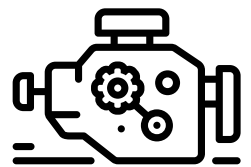
Blind spot camera



BSD



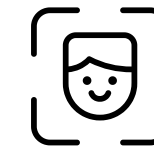
Infrared camera



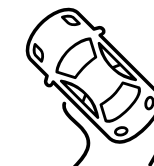
vehicle detail



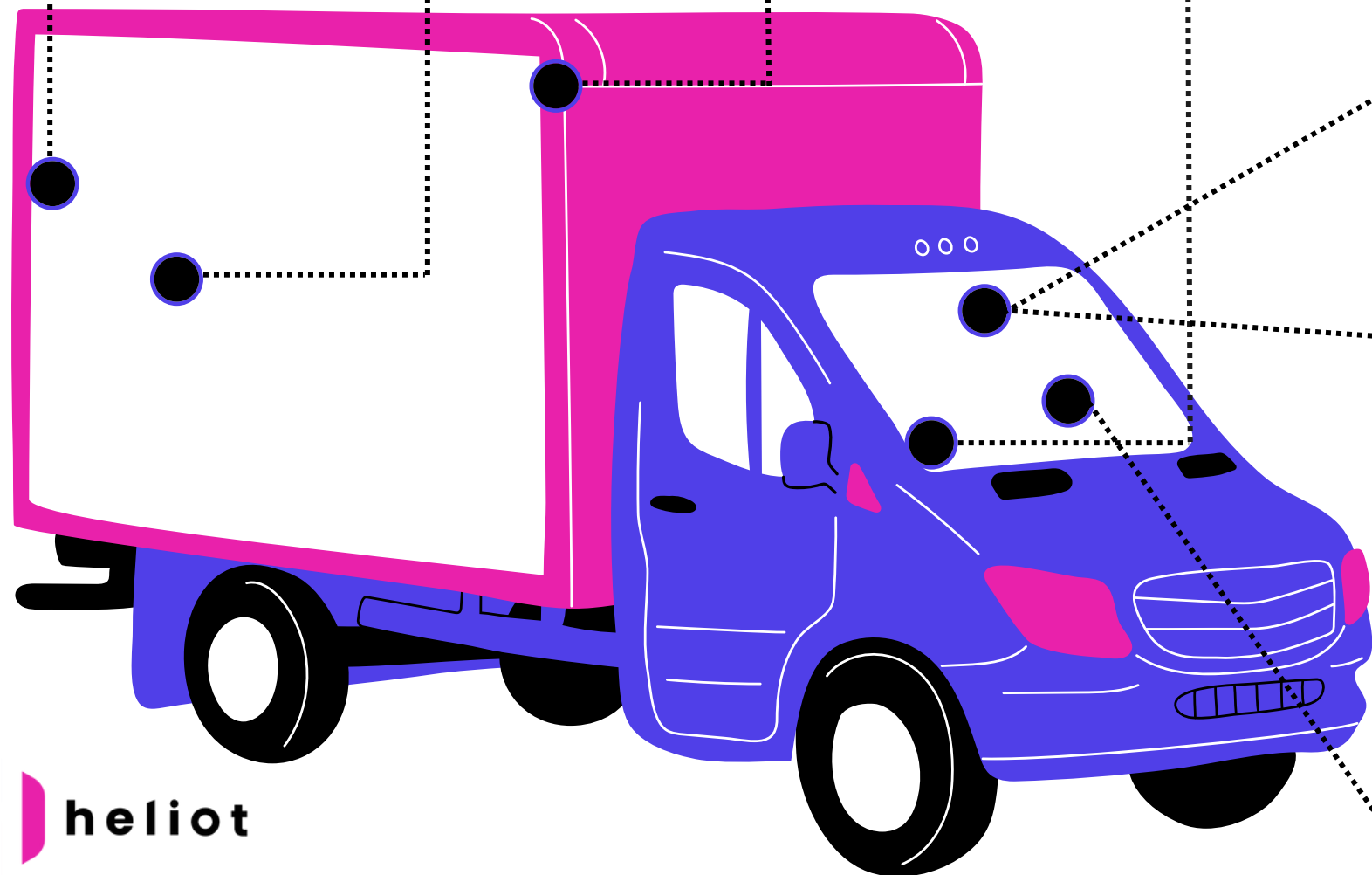
PDPA



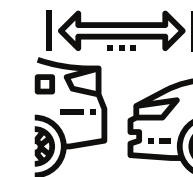
Face ID



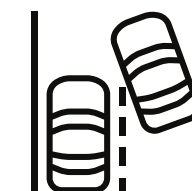
Detecting violent events



Warning of distance ahead of car.



Monitoring Car's Distance Ahead



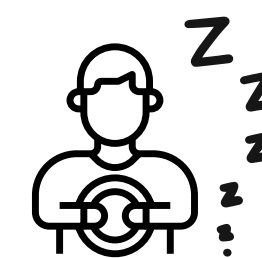
Lane Departure Warning



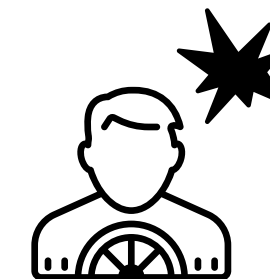
Smoke detection



Detecting phone use during driving.



Exhausted detection



Not focused detection

Killing Features

Routing Optimize

Fuel



Drive History

Events Notification

Update realtime

15 Sec

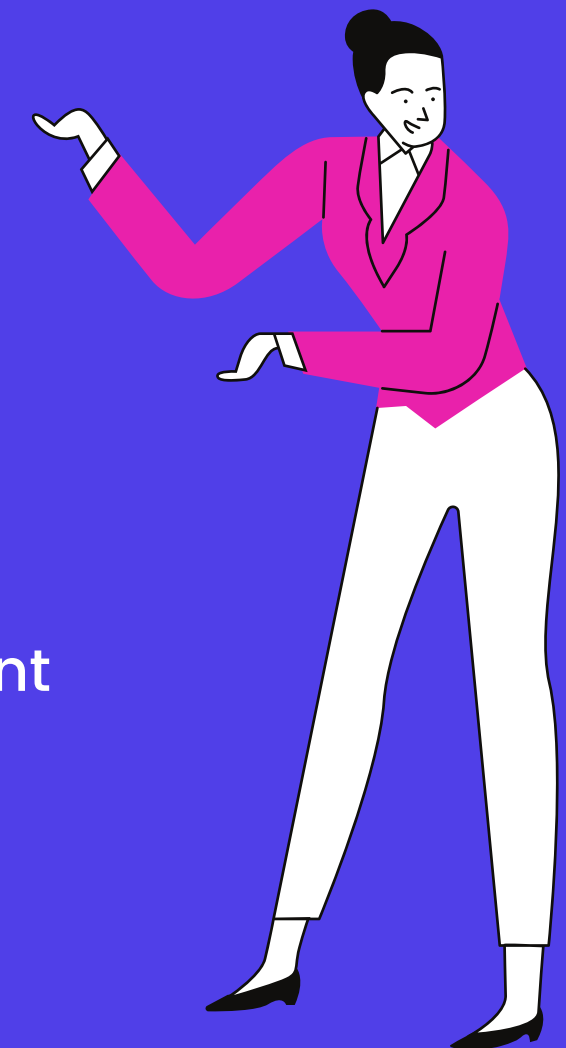
3G/4G Support

Create station area

Google
Maps

Google
Cloud
Platform

CANbus



Connecting notification

Create report

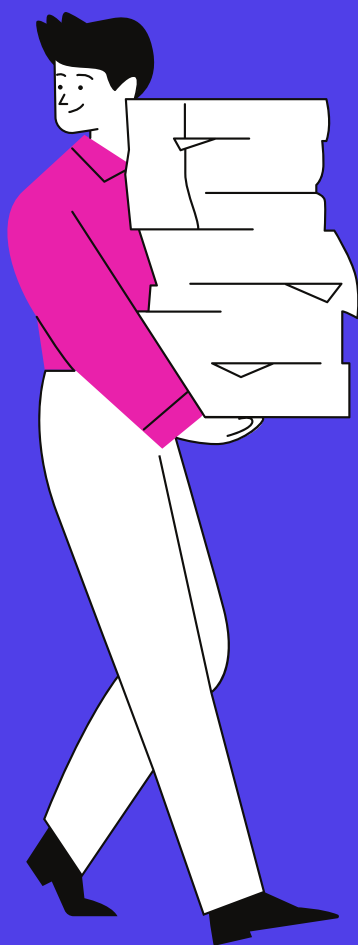
Task Management
System

Driver
Identify



Task Management System

The work management system from Heliot enables customers or operators to manage daily tasks for vehicles, monitor jobs, track arrivals at stations, and generate reports for each day's tasks.



Heliot TMS interface on a laptop. The main view shows a task list for 'งาน TEST1' with the following data:

#	หมายเลขสถานี	ชื่อ	เวลาที่สถานี	ภาพถ่าย	สถานะ
1	DCTEST1	DC TEST1	02 ส.ค. 2021 17:18	x 3	รอดำเนินการ
2	หมายเลข	ชื่อสถานี	-	x 0	รอดำเนินการ
3	หมายเลข	ชื่อสถานี	-	x 0	รอดำเนินการ
4	หมายเลข	ชื่อสถานี ยาว	-	x 0	รอดำเนินการ
5	หมายเลข	ชื่อสถานี ยาว ๆ	-	x 0	รอดำเนินการ
6	หมายเลข	ชื่อสถานี	-	x 0	รอดำเนินการ
7	DCTEST1	DC TEST1	-	x 0	รอดำเนินการ

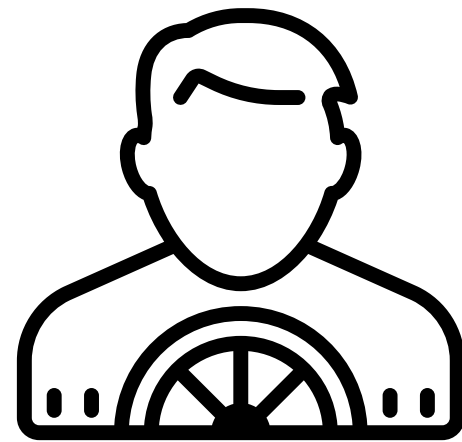
Below the main table, there are expandable sections for other tasks:

- งาน TEST2 (01 ส.ค. 2021)
- งาน TEST3 (29 ส.ค. 2021)
- งาน TEST04 (01 ส.ค. 2021)
- งาน test234 (03 ส.ค. 2021)

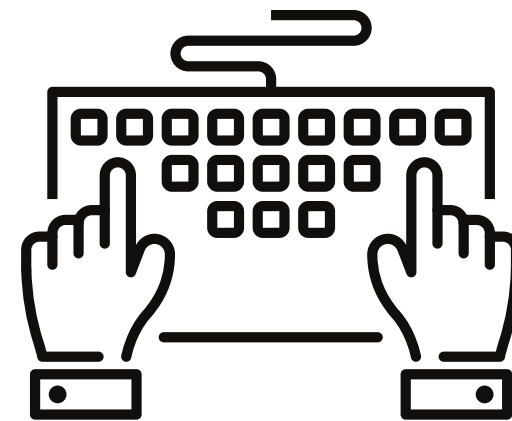
Heliot TMS mobile app interface. The main view shows a task list for 'Task XCC11' with the following data:

ID	สถานะ	ชื่อสถานี	เวลาที่สถานี
1	ปฏิบัติงานแล้ว	DC 33A	3 รูป
2	ปฏิบัติงานแล้ว	Test1	6 รูป
3	รอดำเนินการ	DC 33A	9 รูป
4	รอดำเนินการ	4444	2

TMS Customer Benefits



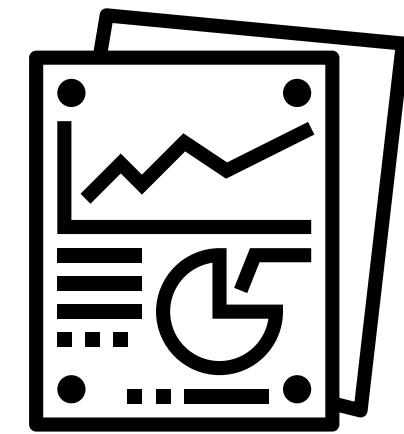
Create and assign tasks to drivers.



Reduce errors from data entry.



Drivers can confirm their arrival at stations through photographs.



Track job status from the daily work dashboard or download files.

Let's dive in

Task Manager

Driver

Create tasks and station lists

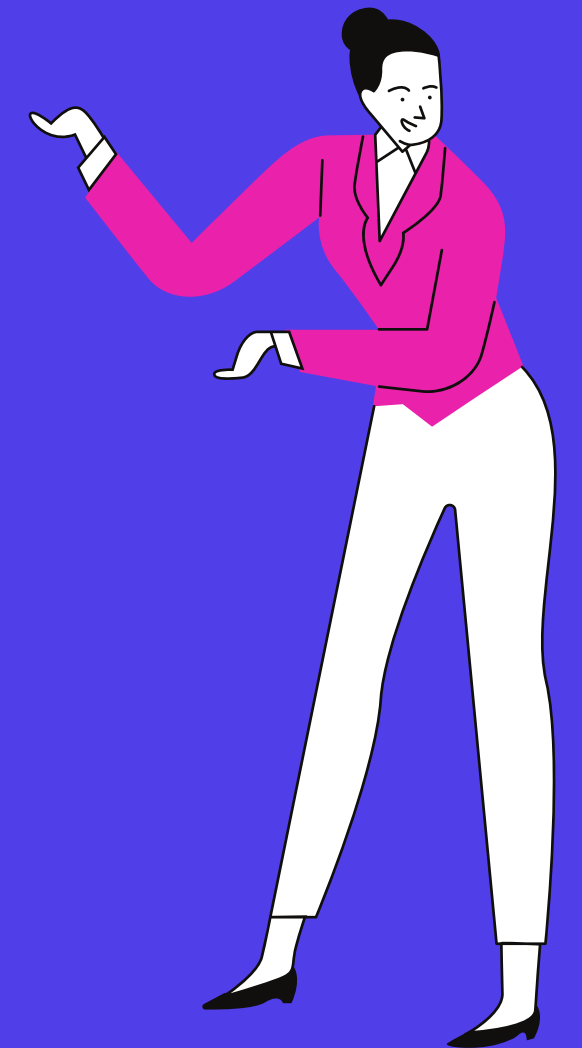
Share links

Upload photo

End task

Follow status

Download report



Maintenance

SCHEDULE AND NOTIFY

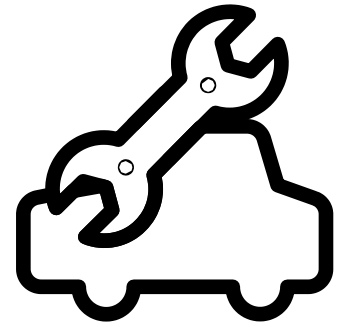
The notification system for task management can be set in three main formats

- Alerts based on the distance traveled by the vehicle
- Alerts set for specific dates and times
- Alerts based on the hours of PTO (Power Take-Off) usage

Notification channel

- Email
- Line Notify
- SMS





Type of Maintenance

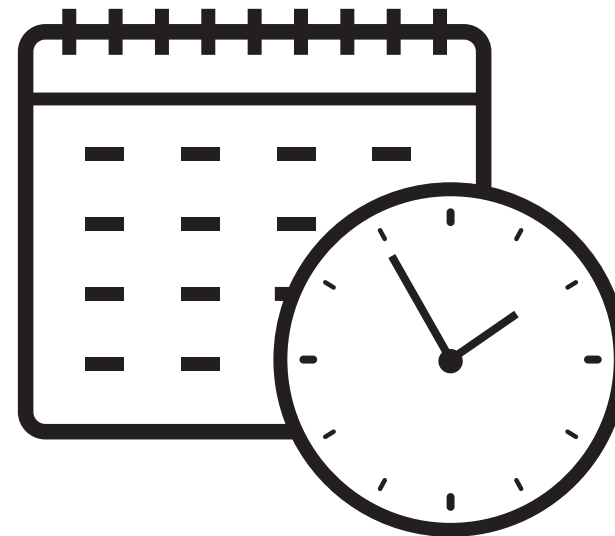
Mileage

Receive alerts when the vehicle reaches a predetermined distance, with the ability to set the starting distance



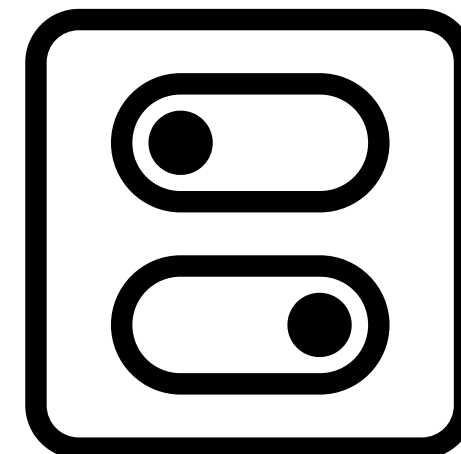
Date

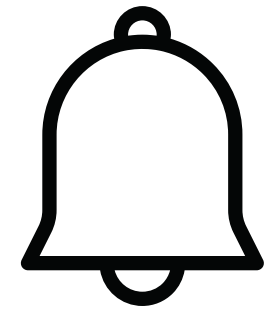
Get notified based on the specified day and time, daily, monthly, yearly, or every Monday to Sunday.



Working hour

Set alerts based on the number of PTO hours, with an option to set the initial number of hours.





Maintenance Notify

Email

5 Mail Limit/days



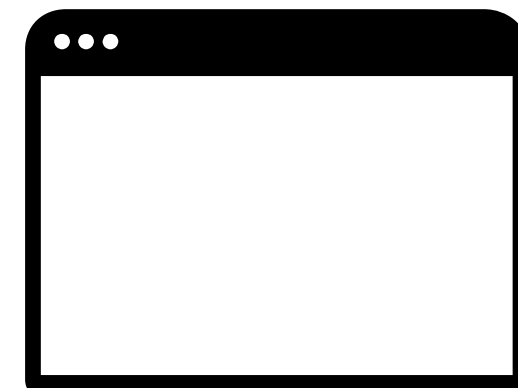
Line Notify

5 Topic/ Limit 1 Groups /Account



Web Notify

No Limit





Our Customers



and 40 more



Reach Us

Mon – Fri 08.00–16.00

555/59 JW Urban

Songprapha Rd. Donmuang,
Donmuang, Bangkok 10210

 **+662 010 6990**

contact@heliot.co.th

<https://heliot.co.th>

